

FREY DIAGNOSTIC DEVICES 2020

EXAMINE. DIAGNOSE. SHARE.

Frey S.J., branded as FREY, is a Polish manufacturer of innovative ophthalmic and optometric diagnostic devices, founded in Warsaw, Poland, 2005 by brothers Wojciech and Jacek Frey, both leading electronic engineers.

WWW.FREYMEDICAL.EU

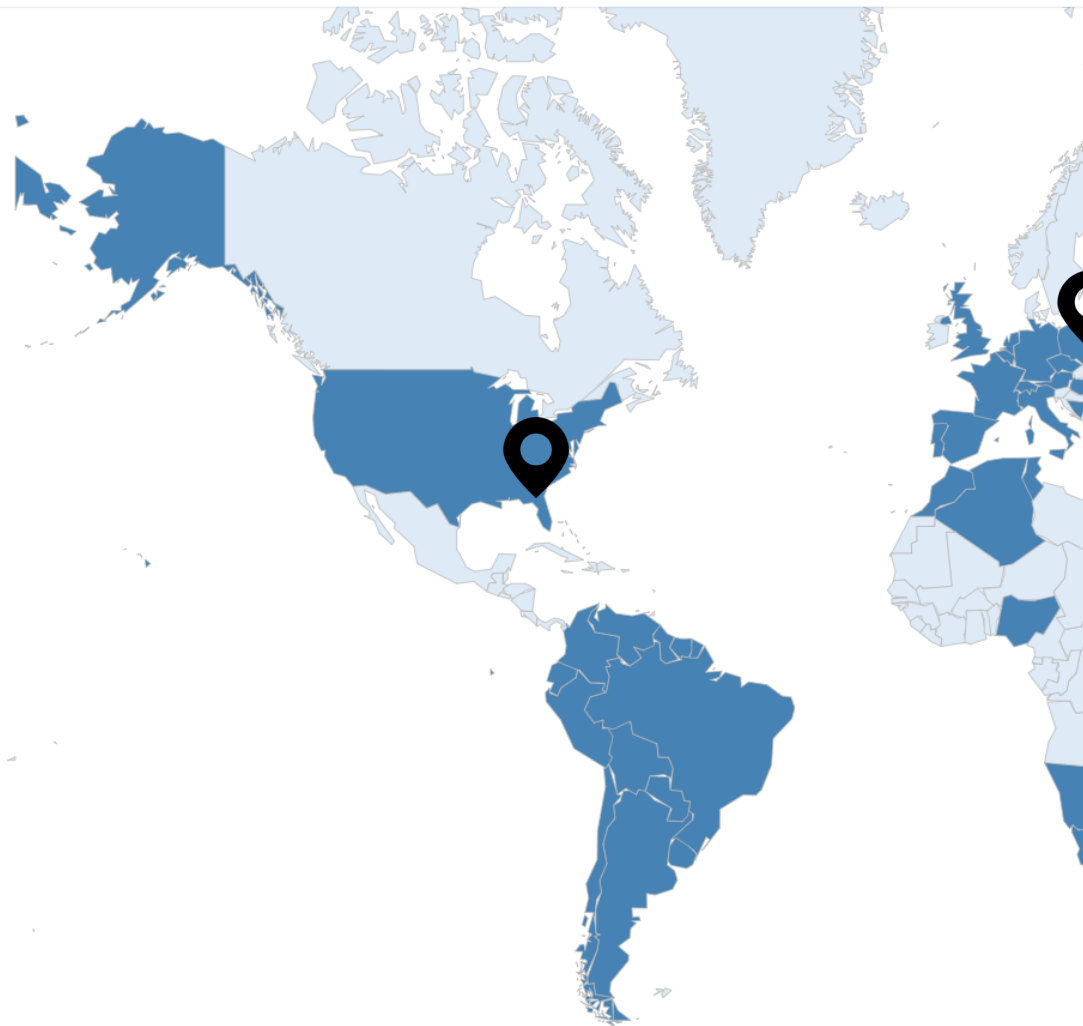


ABOUT FREY BRAND

FREY strategic focus has been to design high performing diagnostic devices in a modern and compact package, providing accurate diagnostics and device reliability, durability, and be accessible to healthcare professionals worldwide.

>10,000* FREY ophthalmic and optometric devices have been installed worldwide since 2005, across every continent, and FREY conforms to the highest levels of global regulatory standards including USD FDA and EU Medical Device Directive 93/42/EEC.

WWW.FREYMEDICAL.EU





Frey

REGIONS

AUSTRALIA

Lee Walker-Roberts
MENA, Africa, Sub-Continent, Far East & APAC
lwalkerroberts@freymedical.eu
+61 408 086 173

EUROPE

Piotr Nowak
Europe
piotr.nowak@freymedical.eu
+48 697 183 852

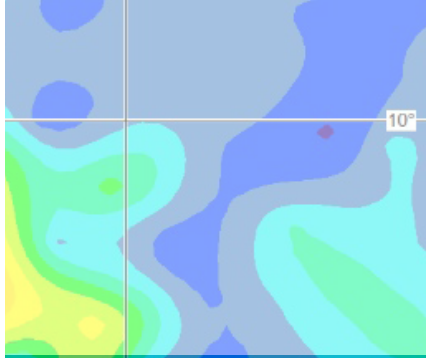
UNITED STATES

Alberto Rodriguez
North America, Canada
support@digitaleyecenter.com
305 771 4562

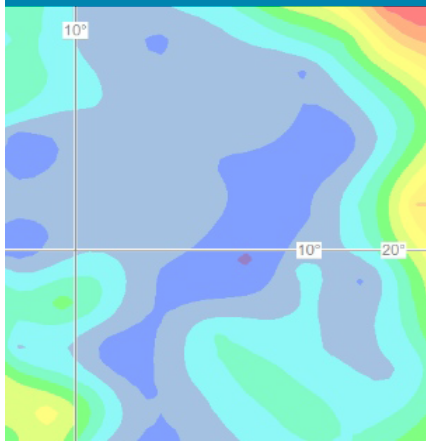
WWW.FREYMEDICAL.EU

PERIMETERS





FREY Perimeter product range covers entire spectrum of visual field test technologies, from complete testing and data analyzing system AP-300 to small size and lightweight glaucoma screening AP-50 device. FREY perimeters software is feature rich and designed to be intuitive and easy to use.



AP-300

AP-300 is a modern and innovative Automated Perimeter that meets global standards for excellence around visual sensitivity testing, diagnosis and management of eye disease. AP-300 platform of advanced diagnostics uses Kinetic and Static Perimetry, including white/white perimetry, blue/yellow (SWAP - Short wavelength automated perimetry) and Flicker (critical flicker fusion perimetry) for early glaucoma detection plus real Goldmann Kinetic Perimetry.

AP-300 comes standard with an extensive range of strategies, fields and test parameters. Built-in camera complemented by automated eye tracking provides reliable automated fixation control. Standard built-in data capture and analysis include regression analysis of the visual field on the basis of historical examinations and standardized fields for presentation and printing of examination results. Easy to navigate, intuitive software allows easy operation and is designed to be operated using the touch screen. AP-300 design includes built-in high quality PC computer.



AP-250/250BY

AP-250 and AP-250BY are fully functional static back LED projection automated perimeters with a full field measurement. AP-250 and AP-250BY use green color LED projection of stimulus in Goldman size III. AP-250BY additionally offers test Blue-on-yellow with a blue stimulus Goldman V size and yellow backlight in accordance with the requirements of the SWAP perimetry.

The intuitive software platform provides operators with a wide range of strategies, fields and test parameters. Control of fixation is performed automatically using the built-in camera or by controlling the position of the blind spot. Built-in data capture and analysis include regression analysis and standardized fields for presentation and printing of examination results. Perimeter AP-250 and AP-250BY can be easily set up with any PC computer running the Windows operating system.



AP-50

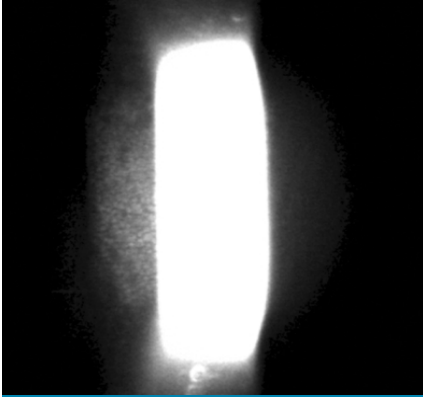
AP-50 is a desktop model, lightweight and fully featured modern static automated perimeter ideal for glaucoma diagnosis and specific requirements of occupational medicine and busy mobile clinicians. AP-50 uses LED back projection of stimulus in white color, and offers a wide range of strategies, test fields and reach set of test parameters to assure quick and precise measurement. Control of fixation is performed automatically using the built-in camera or by controlling the position of the blind spot. Built-in data analysis includes regression analysis and standardized ways of presenting and printing examination results. Perimeter AP-50 can work with any PC computer running the Windows operating system.



SLIT LAMPS & DIGITAL IMAGING

Frey





”

Nice picture.

Very impressive.

Unbelievable optics.*



SL-100 & SL-110 LED SLIT LAMPS

FREY SL-100 and SL-110 are an advanced LED slit lamp microscopes designed for high performance, accurate diagnostics, reliability and patient comfort. Brilliant optics result in stunning image quality and resolution. An innovative LED illumination system with integrated eye illumination and digital camera delivers superb clinical viewing.

FREY slit lamps integrate specialized componentry to connect and control FREY proprietary SLI-200 digital imaging system. LED illumination source eliminate heat and infra red emissions associated with traditional light sources and ensures optimal diagnostic detail from the cornea to the retina. FREY combines modern design and enduring performance providing the clinician with fatigue free examinations every day. Yellow contrast enhancing filter for additional contrast is cleverly integrated into the optical body of the microscope, and can be subtly operated for viewing corneal staining.

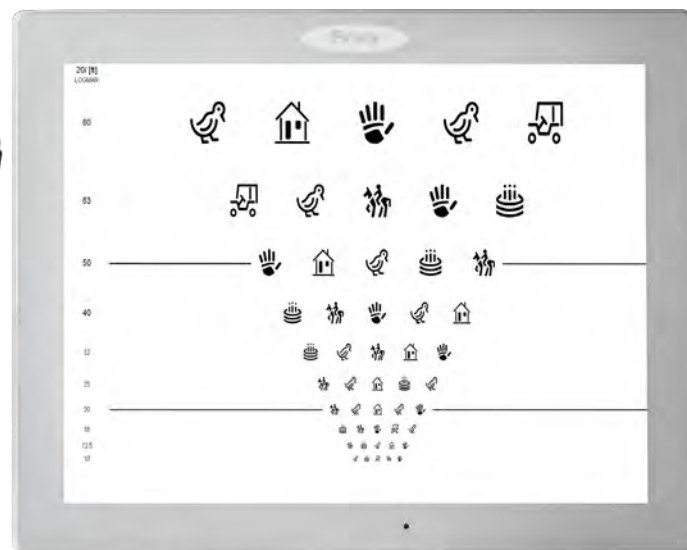
SLI-200 DIGITAL IMAGING SYSTEM

Stream images and videos across multiple devices. FREY SLI-200 allows you to collaborate with other health care professionals, share knowledge and discuss diagnosis, improve clinical outcomes in real time, easily. Ideal for general practices, educational and training institutions. Video streaming and photo sharing enhance clinical collaboration and education. AMOLED screen provides superb image quality - better contrast, higher brightness, fuller viewing angle, a wider colour range to capture even the greatest detail of the eye. AMOLED consume less power, enables FREY to simplify the unique design that is ultra-thin with better durability. Use fast, stable and reliable Wi-Fi AC or Bluetooth 4.2 to connect all your devices. The eye lighting system can be easily controlled using the knob built into the slit lamp base. Rapid examination results and image management is an essential part of clinician and practice workflow. SLI-200 128GB storage ensures flexibility to store large files. Simply select the desired patients images and send to your mobile device or PC.



* True end-user comments on FREY social media channels.

CHART PANELS



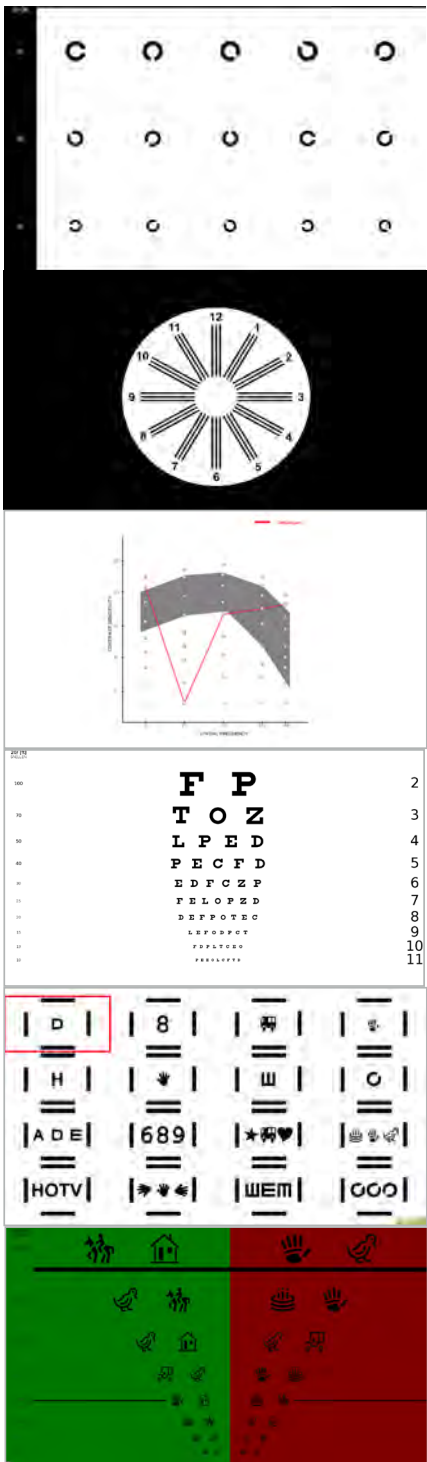


CHART PANELS

FREY Chart Panel suite of devices are one the world's leading fully featured digital acuity system with >5000* devices installed worldwide. Presented in a slim line and attractive LCD panel with a proprietary built-in powerful computer, FREY Chart Panels enhance the look of any modern clinical practice and is designed to perform a comprehensive suite of recognized international visual acuity tests supported by easily customized reporting tools to suit clinician or practice needs.

* data on file

Clinical advantages of FREY Chart Panel technology

- Fully integrated customized design dedicated for visual acuity testing designed to eliminate the risk of computer related software or hardware incompatibility.
- Extensive range of tests and functions result in precise determination of ocular diseases and common medical conditions.
- Extensive range of tests and Optotypes with upgrade capability.
- Complete range of contrast, color and stereo tests.
- Patient education tools.
- Comprehensive Optotype range including EU, UK, US and International standards.
- Precise adjustment of working distance and Optotype setting.
- Smooth and silent operation.
- Can be operated in an illuminated environment.
- Built-in proprietary computer.
- Test reporting.
- Speech and hearing impaired tests.
- Animations and videos.
- Random and User programmable sequencing.
- Mirrored setup.
- Continuous technology upgrades.
- Test Report customized Patient Education and Video Functions.
- Slim Line space saving design, easily mounted.

Convenient to Use

FREY Chart Panels can be mounted directly on the wall with VESA Standard adjustable Wall Mount or Desk Stand. IR remote with direct commands is intuitive and simple to use. Tests can be carried out in daylight illuminated conditions creating a comfortable and convenient environment for patients and clinician.

Superior Contrast Testing

Threshold Optotype Testing: Complements and extends the assessment in visual acuity function. Spatial Frequency Testing: A proprietary contrast test for the early diagnosis of Cataract, Diabetic Retinopathy and other ocular diseases.

Enhanced Children Tests & Fixation Methods

A complete suite of Optotypes, including HOTV and ALLEN Pre-School tests are supported by Animations, Colorful Pictures and Videos.

Test Result Reporting

Patient details can be easily entered into the system upon which the clinician can perform a sequence of acuity and visual tests. Test results can be stored in the FREY Chart Panel memory.

Low Vision AMD Optotypes

Standardized vision tests for patients with Age-related Macular Degeneration (AMD) with Optotypes size and contrast alteration at a calibrated distance.

NON-CONTACT TONOMETER

Frey

TN-100 NON-CONTACT TONOMETER

FREY Non-contact Tonometer TN-100 is a modern diagnostic device, featuring fast accurate examinations, ensuring optimal levels of patient comfort undergoing non-invasive measurement of intraocular pressure. TN-100 measurement is fully automated, saving time for clinician and patient.

Alignment and measurement are automated, with simple hand adjustment of the joystick towards the patient's eye to commence automatic examination. Clinicians can easily adjust the measured IOP data by the value of the central corneal thickness. TN-100 has pre-programmed formulas for IOP correction. If central corneal thickness is entered prior to patient examination, TN-100 will display corrected IOP values.

SD card can be used to backup patient results and to transfer the data to PC computer. Installation version of PC application for patient records management is delivered on SD card supplied with TN-100.

Patient data storage capability and measurement values for 4000 patient data base included. Patient examination record and database is available immediately upon completion of examination. Individual patient examination or entire patient history can be printed with simple one touch. Internal printer simplifies record keeping.

User interface software is optimized for each function, clearly displaying all measurement data guiding the clinician through the measurement process from the alignment of the eye, to the display of the readings. TN-100 menus and device options are simple to navigate and operate.



CHART PROJECTOR

Frey

FR-1003 LED PROJECTOR

The FR-1003 is a modern device for examining visual acuity and other eye functions. It has been designed to provide maximum durability and efficiency. LED as a light source is maintenance free. Three personalized test sequences can be programmed using the intuitive remote control. The projector is delivered with a remote control, projection screen, red-green and polarized glasses and a base and can also be wall mounted.





Frey